

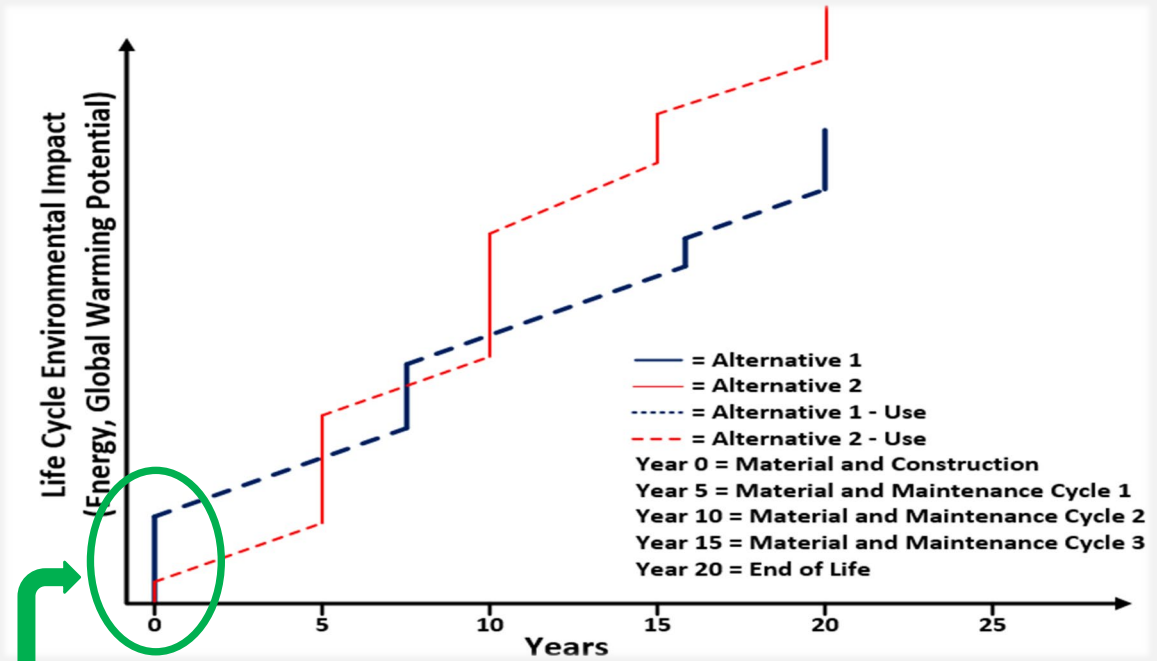
WHERE DO EPDS FIT IN?

ABC Ready-Mix Environmental Impacts

Serving Size: 1 cubic yard of concrete mix no. 123

Global Warming Potential [kg CO ₂ , eq]	3.06x10 ³
Ozone Depletion Potential [CFC-11 eq]	4.24x10 ⁻⁶
Acidification Potential [kg SO ₂ , eq]	21.7
Eutrophication Potential [kg N, eq]	9.25x10 ⁻²
Photochemical Oxidant Creation Potential [kg O ₃ , eq]	30.7
TOTAL ENERGY DEMAND [MJ]:	1166
Non-renewable [MJ]	586
Renewable [MJ]	580

Supplier EPDs for materials



Product Stage			Construction Stage		Use Stage					End-of-Life Stage				Benefits & Loads
A1	A2	A3	A4	A5	B1	B2	B3	B4	B5	C1	C2	C3	C4	D
Raw materials supply	Transport	Manufacturing	Transport	Installation	Use Stage	Maintenance	Repair	Replacement	Refurbishment	De-construction	Transport	Waste Processing	Disposal	Reuse, recovery, recycling potential

Projects